

## Members

**Nigel Wyrley-Birch**  
(Representing the Bishop of Durham  
as Corporate Member)

**Stephen Pickering**  
Individual nominated by the  
Durham Diocesan Board of Education

**John Taylor**  
Chair of Board

**Carolyn Roberts MBE**  
Individual nominated by the Newcastle  
Diocesan Education Board

**Helen-Ann Hartley**  
Right Reverend Bishop of Newcastle

## Trustees

**Helen Beaton**  
(Finance and  
Operational)

**Madeleine Hope**  
(Finance and  
Operational)

**Tim Jones**  
(Education and School  
Improvement)

**John Taylor**  
Chair (Education,  
Buildings, HR) (Chartered  
Fellow of CIPD)

**Paul Rickeard**  
CEO (Education and  
School Improvement)

**Allana Gay**  
(Education and School  
Improvement, EDIJ)

**Charlotte McCabe**  
(Primary Education)

**Paul Bowens**  
(Finance and Change  
Management)

**Jenny Wade**  
(Legal and  
Governance)

**NB:** Also Finance, Audit and Risk Committee (all Trustees aside from Paul Rickeard) and separate Curriculum committee

**Paul Rickeard**  
Chief Executive Officer

**NB:** Powers delegated to Academy Council via Scheme of Delegation

## Our Schools

**Bishopton Redmarshall  
CofE Primary School**  
Headteacher – Jonathon Bull  
LAC Chair – David Robinson

**Egglecliffe CofE Primary School**  
Head Teacher – Emma Robertson  
LAC Chair – Simon Smith

**Heighington CofE Primary School**  
Headteacher – Carly Spence  
LAC Chair – Lisa Thom

**Holy Trinity CofE Primary School**  
Headteacher – Amanda Baines  
LAC Chair – Michael Johnson

**Northern Saints CofE Academy**  
Headteacher – Rachel Heaney  
LAC Chair – Jo Warner

**St George's CofE Academy**  
Headteacher – Judith Skirving  
LAC chair – Anne Vernon

**Stanhope Barrington  
CofE Primary School**  
Headteacher – Deb Cross  
LAC chair – Dr Sarah Haynes

**Bishop Ian Ramsey CofE Primary School**  
Headteacher – Sarah Howes  
LAC Co-Chairs – Philip Harnby/Lee Baum

**Gainford CofE Primary School**  
Head Teacher – Karen Whitaker  
Shared LAC Chair – William Deakin

**Greenhead CofE Primary School**  
Headteacher – Mike Glenton  
Shared LAC Co-Chairs – Sarah Smith  
/Rev Steve White

**Ingleton CofE Primary School**  
Headteacher – Karen Whitaker  
Shared LAC Chair – William Deakin

**St Aidan's CofE Memorial Primary School**  
Headteacher – Gillian Hood  
LAC Chair – Deborah Robinson

**St John's CofE Academy**  
Acting Head – Laura Rossington  
LAC chair – Valerie Cadd

**Ward Jackson CofE Primary School**  
Headteacher – Amy Sparkes  
LAC chair – David Craig

**Cleadon CofE Academy**  
Headteacher – Gary Scott  
LAC Chair – Anna Harrison

**Green Lane CofE Primary School**  
Head Teacher – Rob Goffee  
LAC Chair – Revd Alec Harding

**Henshaw CofE Primary School**  
Headteacher – Mike Glenton  
Shared LAC Co-Chair – Sarah Smith  
/Rev Steve White

**Newbrough CofE Primary School**  
Headteacher – Mike Boucetla  
Shared LAC Chair – Esther Craister-Brown

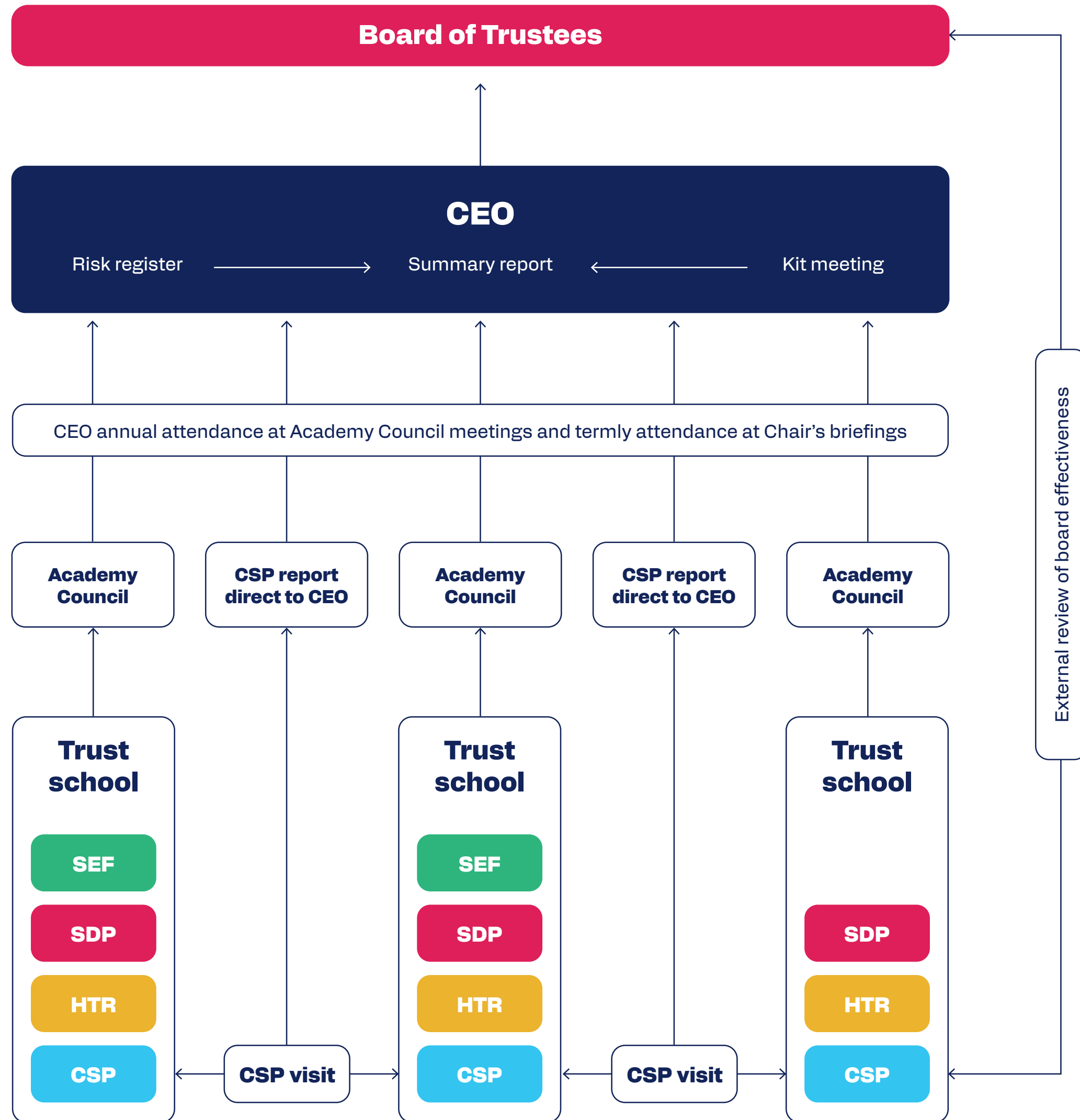
**St Aidan's CofE Primary School**  
Headteacher – Cheryl Lain  
LAC Chair – Joseph Merritt

**St Mary's CofE Primary School**  
Acting Head – Alison Saunderson-Darkes  
LAC chair – Keith Hissitt

**Wark CofE Primary School**  
Headteacher – Michael Boucetla  
Shared LAC chair – Esther Craister-Brown

**Holy Trinity Rosehill CofE Primary School**  
Headteacher – Andrea Swift  
LAC Chair – Rebecca Samuels

# Communications and Accountability



Communication and Accountability			
Code	Document	Author	Frequency
SEF	Self Evaluation Form	School Leaders	Annual (reviewed termly)
SDP	School Development Plan	School Leaders	Annual (reviewed termly)
HTR	Headteacher report to Academy Council	Headteacher	Termly
CSP	Challenge and support partner report	CSP	Baseline report prior to joining Trust (two CSPs). Limitations: CSPs are not independent of the Trust
CEO	Challenge and support partner report	CEO	Termly after submissions of above reports and termly data drop. Limitations: CEO also sits on the boards. Objectivity?

Standardised template for all reports

Quality Assurance and Accountability		
Keeping in touch (kit) meeting	CEO and CSPs 20 minute conference call (key messages from CSP visits) and CEO annual attendance at academy Council meetings and termly chairs meetings	Once per term prior to summary report being written
Risk register	Academy Council in consultation with CEO	Termly
External review	Commissioned by the Board of Trustees completed by a business consultant and CEO of a successful Trust	An independent review of the impact and effectiveness of the Trust Board directors and CEO