

Members

Nigel Wyrley-Birch
(Representing the Bishop of Durham
as Corporate Member)

Stephen Pickering
Individual nominated by the
Durham Diocesan Board of Education

John Taylor
Chair of Board

Carolyn Roberts MBE
Individual nominated by the Newcastle
Diocesan Education Board

Helen-Ann Hartley
Right Reverend Bishop of Newcastle

Trustees

Helen Beaton
(Finance and
Operational)

Madeleine Hope
(Finance and
Operational)

Tim Jones
(Education and School
Improvement)

John Taylor
Chair (Education,
Buildings, HR) (Chartered
Fellow of CIPD)

Paul Rickeard
CEO (Education and
School Improvement)

Allana Gay
(Education and School
Improvement, EDIJ)

Charlotte McCabe
(Primary Education)

Paul Bowens
(Finance and Change
Management)

Jenny Wade
(Legal and
Governance)

NB: Also Finance, Audit and Risk Committee (all Trustees aside from Paul Rickeard) and separate Curriculum committee

Paul Rickeard
Chief Executive Officer

NB: Powers delegated to Academy Council via Scheme of Delegation

Our Schools

**Bishopton Redmarshall
CofE Primary School**
Headteacher – Jonathon Bull
LAC Chair – David Robinson

Egglecliffe CofE Primary School
Head Teacher – Emma Robertson
LAC Chair – Simon Smith

Heighington CofE Primary School
Headteacher – Carly Spence
LAC Chair – Lisa Thom

Holy Trinity CofE Primary School
Headteacher – Amanda Baines
LAC Chair – Michael Johnson

Northern Saints CofE Academy
Headteacher – Rachel Heaney
LAC Chair – Jo Warner

St George's CofE Academy
Headteacher – Judith Skirving
LAC chair – Anne Vernon

**Stanhope Barrington
CofE Primary School**
Headteacher – Deb Cross
LAC chair – Dr Sarah Haynes

Bishop Ian Ramsey CofE Primary School
Headteacher – Sarah Howes
LAC Co-Chairs – Philip Harnby/Lee Baum

Gainford CofE Primary School
Head Teacher – Karen Whitaker
Shared LAC Chair – William Deakin

Greenhead CofE Primary School
Headteacher – Mike Glenton
Shared LAC Co-Chairs – Sarah Smith
/Rev Steve White

Ingleton CofE Primary School
Headteacher – Karen Whitaker
Shared LAC Chair – William Deakin

St Aidan's CofE Memorial Primary School
Headteacher – Gillian Hood
LAC Chair – Deborah Robinson

St John's CofE Academy
Acting Head – Laura Rossington
LAC chair – Valerie Cadd

Ward Jackson CofE Primary School
Headteacher – Amy Sparkes
LAC chair – David Craig

Cleadon CofE Academy
Headteacher – Gary Scott
LAC Chair – Anna Harrison

Green Lane CofE Primary School
Head Teacher – Rob Goffee
LAC Chair – Revd Alec Harding

Henshaw CofE Primary School
Headteacher – Mike Glenton
Shared LAC Co-Chair – Sarah Smith
/Rev Steve White

Newbrough CofE Primary School
Headteacher – Mike Boucetla
Shared LAC Chair – Esther Craister-Brown

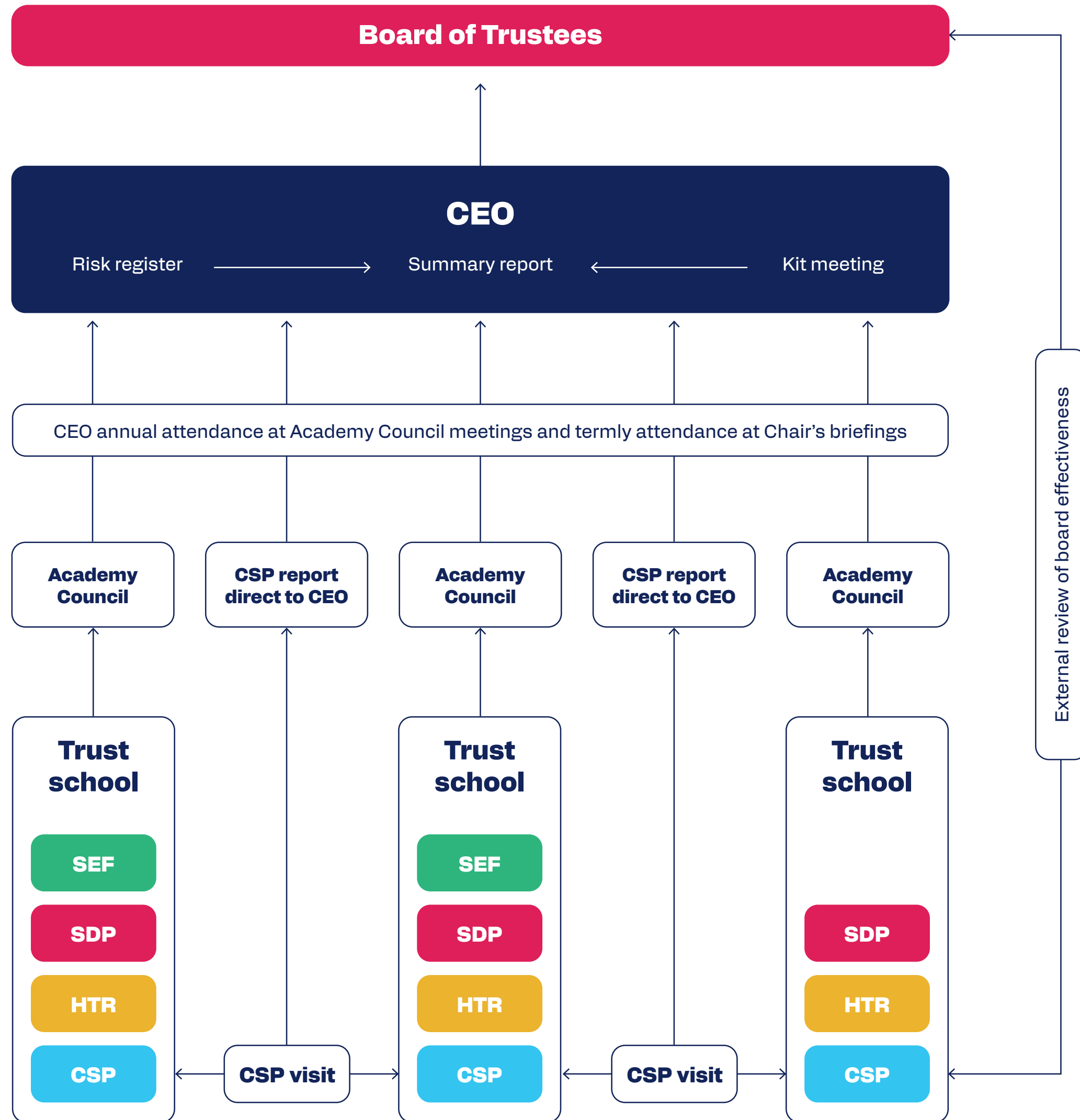
St Aidan's CofE Primary School
Headteacher – Cheryl Lain
LAC Chair – Joseph Merritt

St Mary's CofE Primary School
Headteacher – Shaun Smith
LAC chair – Keith Hissitt

Wark CofE Primary School
Headteacher – Michael Boucetla
Shared LAC chair – Esther Craister-Brown

Holy Trinity Rosehill CofE Primary School
Headteacher – Andrea Swift
LAC Chair – Rebecca Samuels

Communications and Accountability



Communication and Accountability

Code	Document	Author	Frequency
SEF	Self Evaluation Form	School Leaders	Annual (reviewed termly)
SDP	School Development Plan	School Leaders	Annual (reviewed termly)
HTR	Headteacher report to Academy Council	Headteacher	Termly
CSP	Challenge and support partner report	CSP	Baseline report prior to joining Trust (two CSPs). Limitations: CSPs are not independent of the Trust
CEO	Challenge and support partner report	CEO	Termly after submissions of above reports and termly data drop. Limitations: CEO also sits on the boards. Objectivity?

Standardised template for all reports

Quality Assurance and Accountability

Keeping in touch (kit) meeting	CEO and CSPs 20 minute conference call (key messages from CSP visits) and CEO annual attendance at academy Council meetings and termly chairs meetings	Once per term prior to summary report being written
Risk register	Academy Council in consultation with CEO	Termly
External review	Commissioned by the Board of Trustees completed by a business consultant and CEO of a successful Trust	An independent review of the impact and effectiveness of the Trust Board directors and CEO